



An AiA Industries Company

DALYTE
 290 East 56th Ave
 Denver, CO 80216
 303-296-9696

How to run electrical wires on a DALYTE Skylight for light fixtures, etc

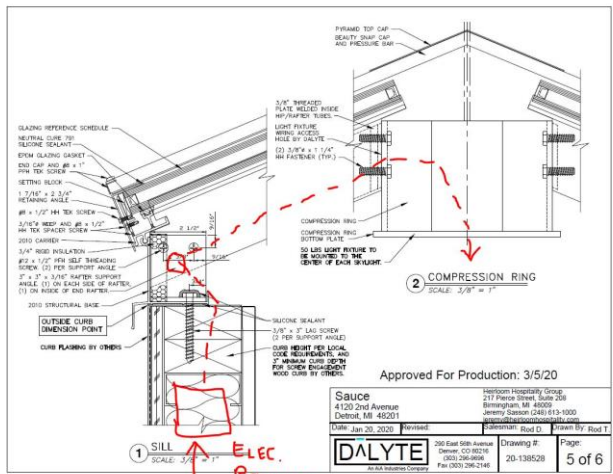
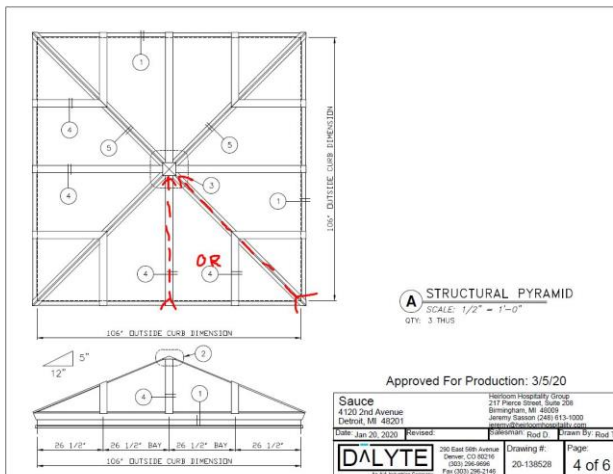
BEFORE YOU START: Skylight(s) will typically handle fixtures of 100lbs or less without review by an engineer IF the electrician/installer of the lighting fixture installs them with adequate hardware, etc (DALYTE makes no representation as to suitability nor is responsible if this is not done properly)

- 1) First you must rough-in the electrical to below the curb area. Generally, you have 2 choices: middle or a corner...(middle if available, is easier on a pyramid or hipped ridge)
- 2) Once you have your electrical rough-in placed and the Skylight frame is installed and prior to the glass being installed,
 - a. Decide which is closest/best hollow Rafter to run your electrical wires thru from the Skylight Base to the light fixture.
 - b. Drill an access hole into the base of a regular rafter or a hip rafter.
 - c. Then drill an access hole where the chosen rafter meets the Compression Ring or Ridge Rafter tube.
 - d. Then drill an access hole out the bottom of the Compression Ring (1/4" thick aluminum) or Ridge Rafter Tube (1/8" thick aluminum).
- 3) Run electrical wires, install fixture hardware, etc
 - a. Note: care must be taken as to properly protect electrical wires from cutting or short circuiting, etc on sharp corners of access holes in aluminum frame.

Please let us know if we can be of further assistance.
 Thank you

PYRAMID or HIPPED RIDGE Skylights

(note-some larger Hipped Ridge Skylights have regular Rafter conditions similar to what is found on a Gabled Ridge Skylight)



Decide which is closest/best hollow Rafter to run your electrical wires thru from the base to light fixture.



PYRAMID or HIPPED RIDGE Skylights cont'd



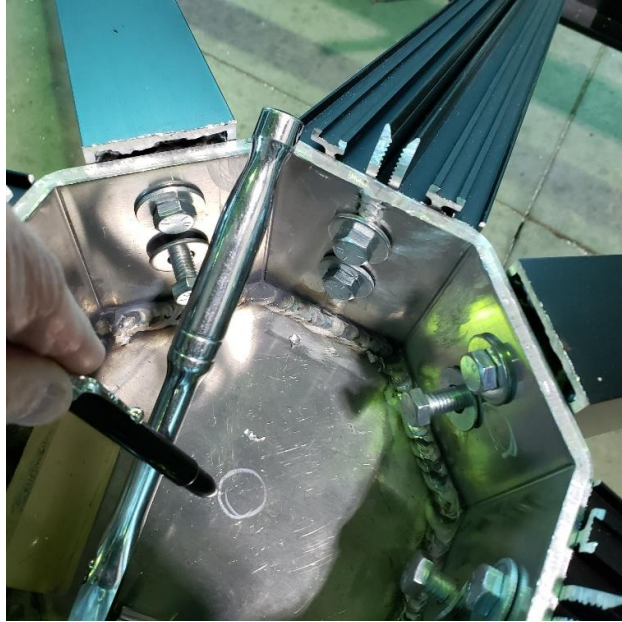
There are several locations where electrical from rough-in can be brought into Skylight at wood curb. (3 locations shown to drill thru frame base or curb)



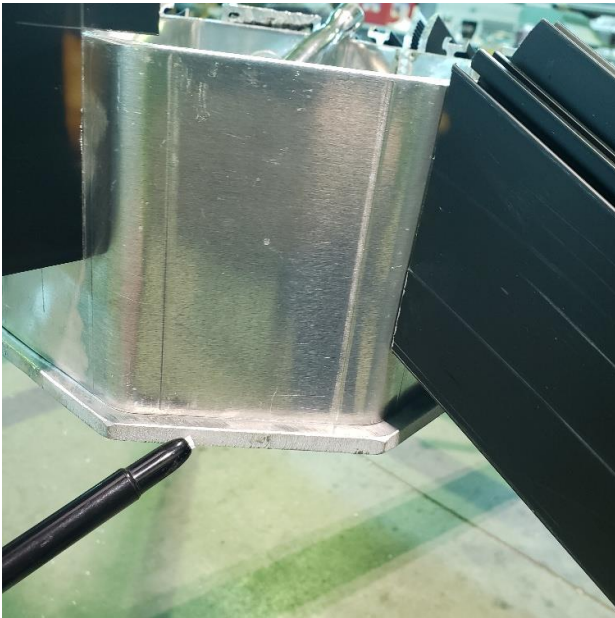
Drill access hole into Regular Rafter at Base thru clip or alternate drill into Hip Rafter



PYRAMID or HIPPED RIDGE Skylights cont'd



Drill hole thru Compression Ring into Rafter end-plate, then drill access hole / mount lamp hardware as needed in insure proper and safe attachment of fixture.

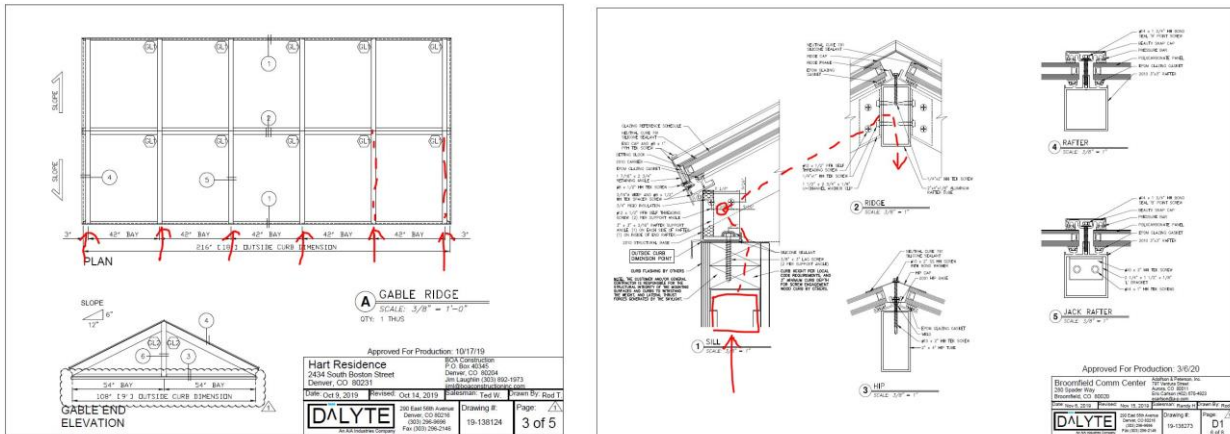


Note 1/4" aluminum bottom plate

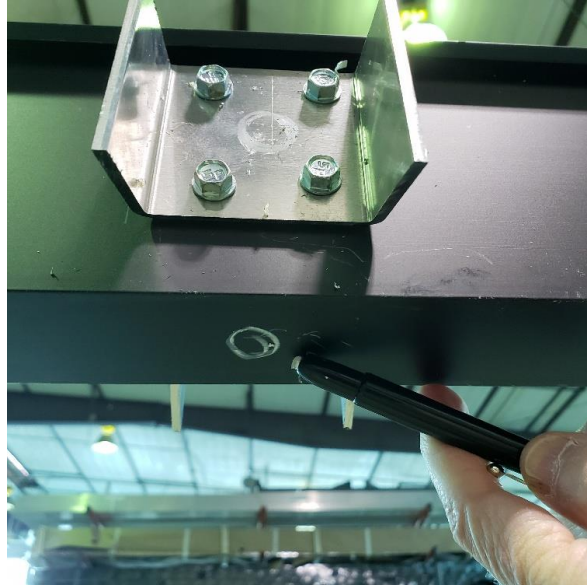
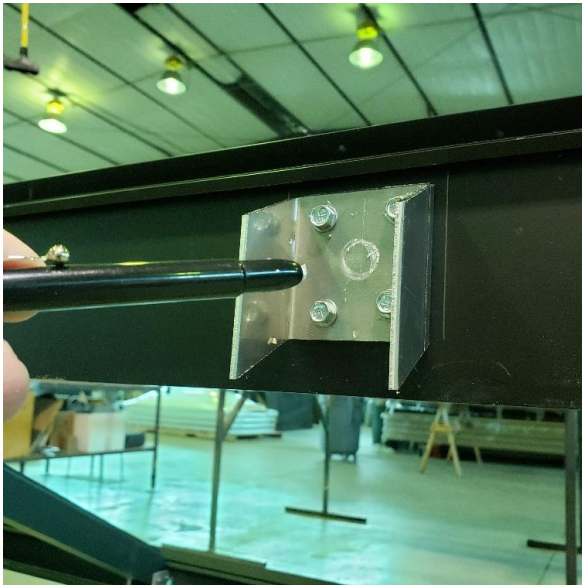


GABLED RIDGE & RIDGE Skylights

NOTE This type of Skylight needs the Ridge Rafter Tube access hole drilled while it is being assembled or during fabrication at DÄLYTE Factory. They are similar to Pyramids but have a Ridge Rafter/Tube in lieu of a Compression Ring. Electrical rough-in, access holes into Rafters are the same



Drill access hole into Regular Rafter thru clip at Base (similar to Pyramid)

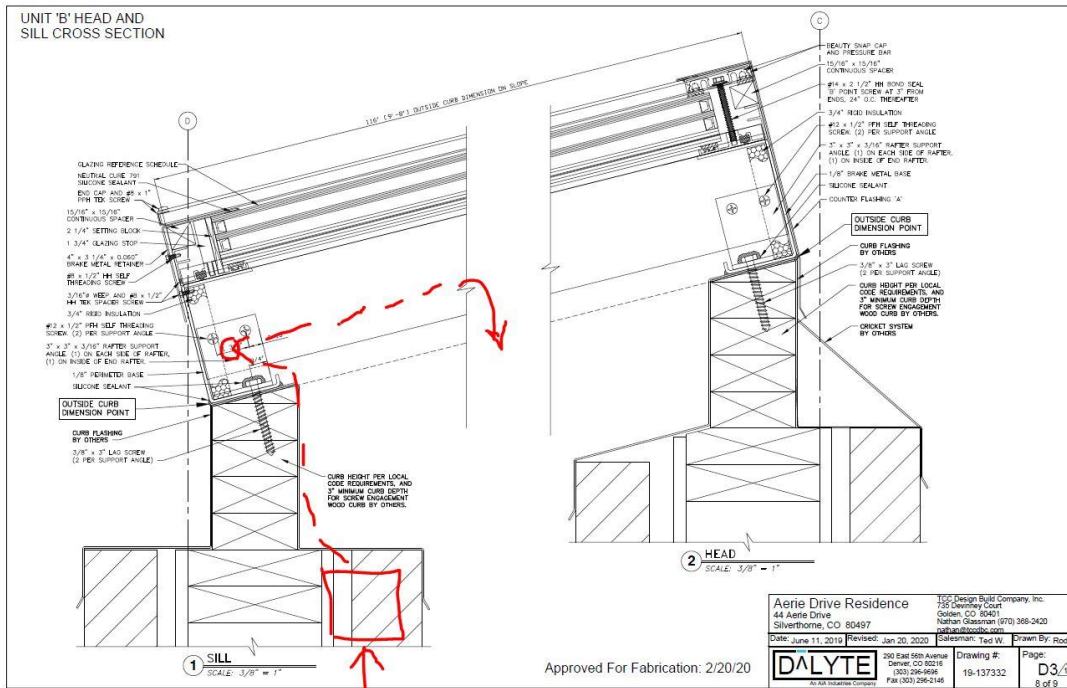


BEFORE FINAL ASSEMBLY or at **DÄLYTE Factory**- Drill access hole into Ridge Rafter thru clip, then drill access hole / mount lamp hardware as needed in insure proper and safe attachment of fixture. (1/8" thick wall)



SINGLE SLOPE Skylights

Is similar to Pyramid but the final access hole is located along the Rafter (1/8" thick wall)



Please let us know if we can be of further assistance.
Thank you